

Mettle Rings



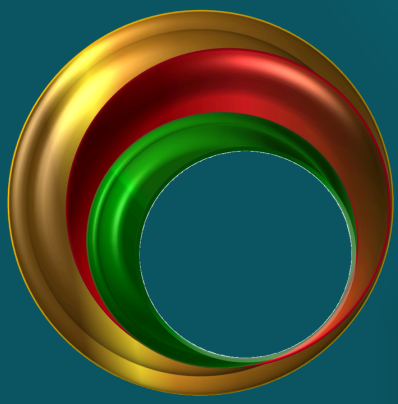
PRESENTS

Empower **edify**

*Empowering
Transformations*

Value





Mettle Rings

Empowered edify



Our Clients Enjoy

Wide Range Of Training Programs

Training Needs Analysis

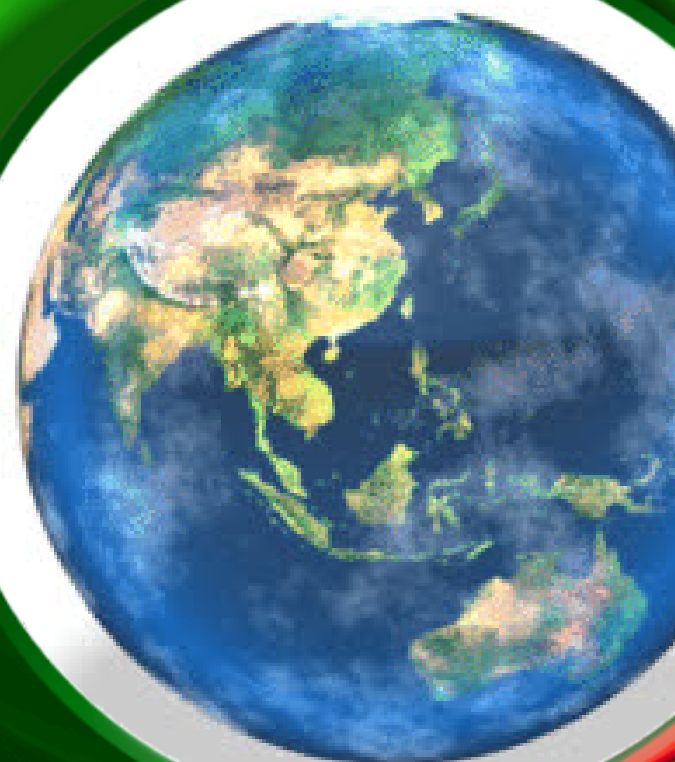
End-To-End Training Solutions

Customized Training Packages

Return Based Evaluative Programs

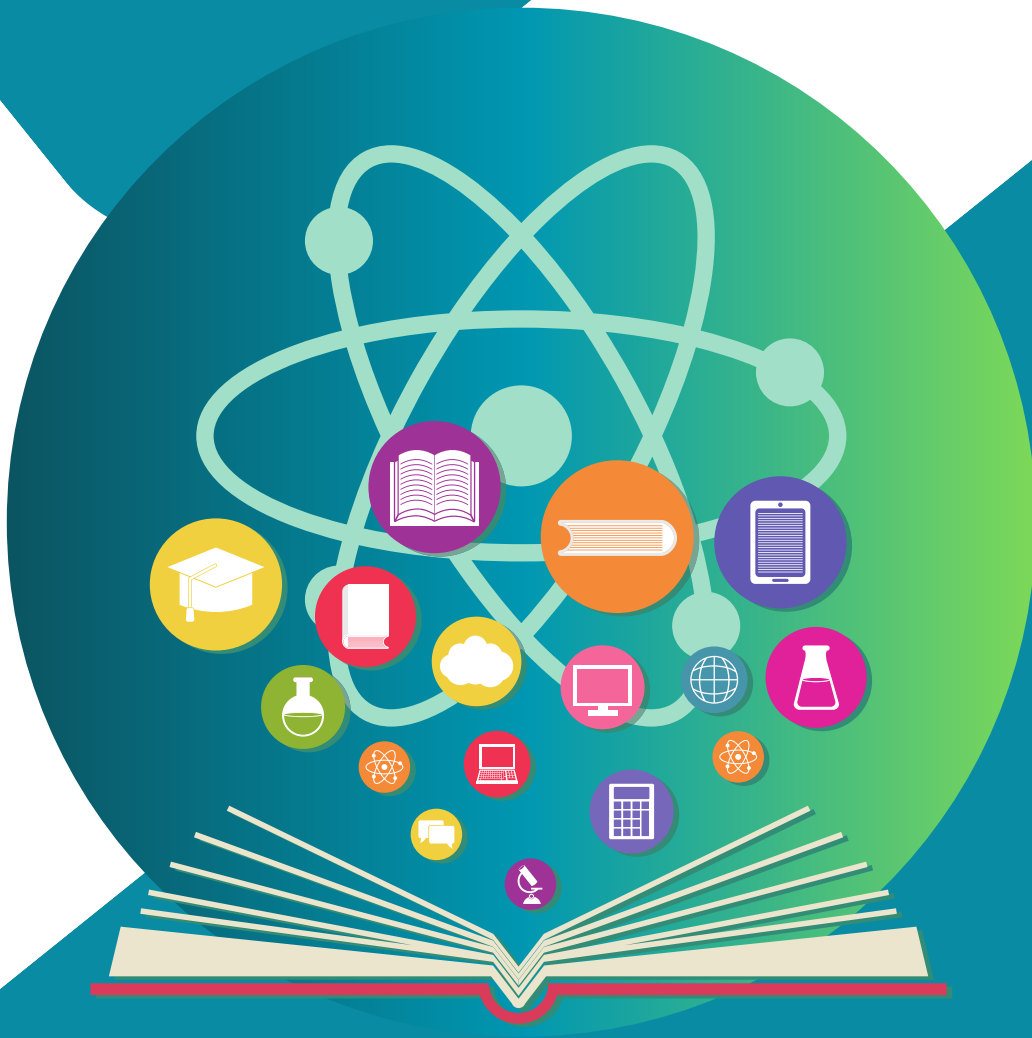
Post-Implementation Support

Empowering
Transformations

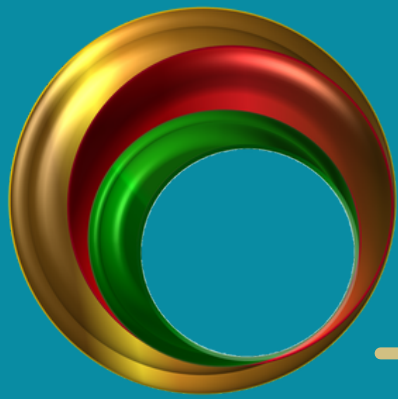


Empower**edify**

www.mettlerings.be



Know us



Mettle Rings

We are consultants at the core, in Business Growth & Strategic Communication Management support to our clients.

Effective Business Growth Strategies ✓

Impeccable Communication Outreach for robust identities ✓

Workforce Training & Development Support ✓

Empoweredify**** is our star offering in the learning, upskilling & education management segment. Our unique programs offer needs based solutions for workforce development and workplace improvement. Our post-training implementation support makes our services distinctly useful for our connoisseurs.

To attain success, leaders must hone their skills and set clear business goals by crafting a strategy that creates value for the firm, customers, suppliers, and employees.

Michael Boyles

Harvard Business School Online

Upskill With

Empower **edify**

- **Stronger Workforce**
- **Better Workplaces**
- **Robust Growth!**



- *Addressing Diverse Learning Needs*
- *A Strong Network Of Qualified Trainers*
- *Multiple Modes Of Training*
- *Return Based Evaluative Programs*
- *Post-Implementation Support*

Empower **edify**



Empower**edify**



Corporate Skills

Training Programs



Employees adept in Corporate Skills are the key drivers of organizational success.

Corporate Skills are essential for every employee in an organization to ensure synergistic growth. Skills like Decision Making, Effective Communication, Interpersonal Skills, Diversity Sensitivity etc. are the building blocks of mutual employee trust and confidence.

Employees skilled in corporate etiquettes are better aligned with the organization's vision & objectives; And are instrumental in driving the business growth.



Corporate Skills

- **Workplace Empathy (Inclusivity)**
- **Workplace Imposter Syndrome**
- **POSH Training**
- **Interactive Skills**
- **Collaboration Skills**
- **Influential Communication Skills**
- **Managing Conversations Skills**
- **Executive Presence Training**
- **Presentation Skills**
- **Corporate Grooming**
- **Corporate Etiquettes in Communication**
- **Business Networking**
- **Assertiveness Training**
- **Accent Neutralization Training**

The List is indicative. Actual program is carved out post needs analysis respectively.



**Training
Programs**

Empower **edify**



Strategic Skills

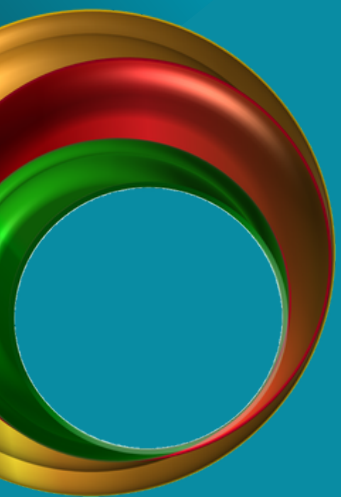
Training Programs

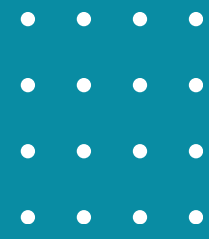


Strategy is the backbone of a business entity and enables to successfully lead long-term objectives with informed decisions.

A good strategy offers an organization a clear vision, a resilient business model, and a risk evasive outlook.

A strategic mindset of employees fosters an environment of focused growth and ensures that businesses thrive under effective leaderships at all levels.





Strategic Skills

- **Crisis Management Training**
- **Crisis Response Communication**
- **Analytical Skills Training**
- **Decision Making**
- **Enterprise Risk Management**
- **Organizational Resilience Training**
- **6 Thinking Hats Training**
- **MBTI (Myers-Briggs Type Indicator) Training**
- **Vision-Value-Vicinity (V3)**
- **Building Synergies**
- **Solutions Mindset**
- **Perception Management**

The List is indicative. Actual program is carved out post needs analysis respectively.



 **Training Programs**

Empoweredify



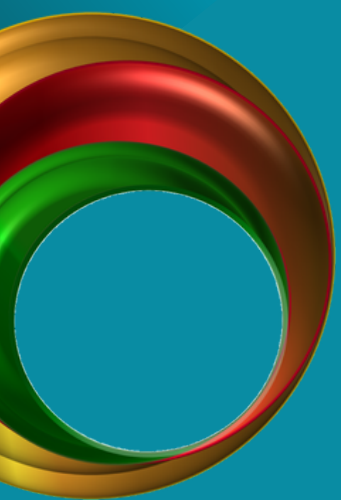
People Management

Training Programs



Facilitate Your Employees to Lead and Succeed with People Management Training

Effective People Management is the key to unlocking higher employee engagement, fostering a productive workplace, and gaining a strategic advantage. Executives, adept in modern people management techniques play catalysts in shaping high-performing teams, nurturing leadership qualities, and are instrumental in organizational growth.





People Management

- **Emotional Intelligence**
- **Communicate to Influence**
- **Collaborative Brilliance**
- **Multitasking Vs Multi-Managing**
- **Balance Time, Task & Life**
- **Personal Vs Personnel Effectiveness**
- **Managing Difficult Conversations**
- **Train The Trainers**
- **B-Proactive! Training**
- **Effective Communication Skills**
- **Personal Orientation**
- **Persuading To Win**
- **Brand 'You'!**

The List is indicative. Actual program is carved out post needs analysis respectively.



 **Training Programs**



Empoweredify



Leadership Management

Training Programs



Strategic leadership significantly contributes to businesses by providing clear direction & vision, enabling organizations to navigate market volatility & proactively embrace change. Leaders adept in strategic thinking steer their organizations through challenges through timely appreciation & capitalization of opportunities for growth & development.

Leadership Management Training Programs are designed to mold leaders who can envision the future, inspire their teams, & execute plans that transform their organizational landscape.





Leadership Management

- **Planning & Strategy**
- **Managing & Developing Teams**
- **Organizational Resilience**
- **Managing Transitions**
- **Material Management**
- **Mind Mapping Approach**
- **Prioritization Vs Task Management**
- **Risk Management**
- **Operational Excellence**
- **KCSM (Kano Customer Satisfaction Model)**
- **Managing Customer Challenges**
- **Failure Modes & Effects Analysis**
- **Media Management**

The List is indicative. Actual program is carved out post needs analysis respectively.



 **Training Programs**

Empower **edify**



Lifestyle

Health & Mindfulness

Training Programs

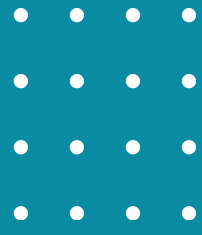


Healthy workforce is an organization's true wealth. Our special training programs offer seamless healthy lifestyle and mindful workplace motivations to your employees.

A healthy workplace is the one that offers a safe, stress-free and an encouraging platform to its employees.

Organizational Psychology has opened up multiple arenas to make this accessible.





Lifestyle

Health & Mindfulness

- **Growth Mindset**
- **Anger Management**
- **Self Awareness**
- **Neuro-Linguistic Programming**
- **Highly Effective Lifestyles**
- **Dealing with Challenges**
- **Peer-Awareness**
- **Dealing with Aggressive People**
- **Creativity - A mindset!**
- **Assertiveness**
- **Adaptability**
- **Multi-Culture Inclusivity**
- **Ethics & Sustainability**



The List is indicative. Actual program is carved out post needs analysis respectively.



**Training
Programs**

Specialization

Unique Programs



01 Behavioural



02 Strategic



03 Cognitive



04 Psychographic

Each program is designed with intertwined elements to address various organizational needs.

What makes them unique is the multi-dimensional instructional approach which ensures that engagement & learning are optimized at the individual level.

Empower **edify**

Training Mode



Instructor-led Training Environments

01

Virtual

Group training sessions bring expert-led, high-quality training to your teams anywhere, ensuring consistency and seamless convenience integration.

02

On-Site

Group training delivers immersive & insightful learning experiences right in the comfort of your office. Offers higher engagement & better learning experience through direct interaction.

03

Off-Site

Group training programs offer a unique opportunity for teams to immerse themselves in focused & dynamic learning environments away from their usual workplace distractions, thus enhancing learning engagement.



Empoweredify



Reachout

info@mettlerings.be

OR

+91 7303106046

(WhatsApp Only)

*And we will
get in touch with you...*

Let's Connect

For your customized requirement

We do not believe in one-fits-all proposition. Every organization is unique and so are its needs. Let us meet at the earliest to carve the masterpiece your company needs!

